

LEGACY CHRISTIAN ACADEMY OF CENTRAL TEXAS



2315 OSAGE RD GATESVILLE TX 6PM SEPT. 28TH

LEGACY CHRISTIAN ACADEMY **OF CENTRAL TEXAS**

The plans and goals shared about Legacy Christian Academy of Central Texas (“LCA”) reflect our current vision and expectations for the future. Because circumstances can change, some details—such as timelines, programs, or resources—may be adjusted as we continue to grow.

We share this information to communicate our heart and direction, but it should not be taken as a guarantee of specific outcomes. We are committed to keeping our families, donors, and our community updated as plans develop and to remaining faithful stewards of the opportunities God places before us.

LEGACY CHRISTIAN ACADEMY OF CENTRAL TEXAS

VISION

**STUDENTS WILL BE BIBLICALLY ROOTED,
ACADEMICALLY EXCELLENT, AND EMPOWERED
TO FULFILL THEIR GOD-GIVEN PURPOSE TO
TRANSFORM CULTURE.**



LEGACY CHRISTIAN ACADEMY **OF CENTRAL TEXAS**

MISSION

LEGACY CHRISTIAN ACADEMY EQUIPS STUDENTS THROUGH A FAITH-INTEGRATED, TRADITIONAL EDUCATION. THROUGH RIGOROUS ACADEMICS, DISCIPLESHIP, AND COMMUNITY PARTNERSHIPS, STUDENTS ARE PREPARED TO EXCEL AND CONFIDENTLY PURSUE THEIR GOD-GIVEN PURPOSE



LEGACY CHRISTIAN ACADEMY **OF CENTRAL TEXAS**

SCRIPTURAL FOUNDATION

**THOSE FROM AMONG YOU
SHALL BUILD THE OLD WASTE PLACES;
YOU SHALL RAISE UP THE FOUNDATIONS OF MANY
GENERATIONS; AND YOU SHALL BE CALLED THE
REPAIRERS OF THE BREACH,
THE RESTORERS OF STREETS TO DWELL IN
ISAIAH 58:12**



CORE VALUES

1

BIBLICAL FOUNDATION



Scripture guides all decision-making.

“All Scripture is God-breathed and is useful for teaching, rebuking, correcting and training in righteousness, so that the servant of God may be thoroughly equipped for every good work.”

— 2 Timothy 3:16–17 (NIV)

CORE VALUES

2

ACADEMIC EXCELLENCE



Rigorous academics, creative arts,
athletics, and skill development

**“Whatever you do, work at it with all
your heart, as working for the Lord,
not for human masters.”**

— Colossians 3:23 (NIV)

CORE VALUES

3

SPIRITUAL DISCIPLESHIP



Mentorship and faith formation

“Therefore go and make disciples of all nations, baptizing them in the name of the Father and of the Son and of the Holy Spirit, and teaching them to obey everything I have commanded you.”

— Matthew 28:19–20 (NIV)

CORE VALUES

4

COMMUNITY PARTNERSHIP



School, home, and community
collaboration

“Two are better than one, because they have a good return for their labor: If either of them falls down, one can help the other up.”

— Ecclesiastes 4:9–10 (NIV)

CORE VALUES

5

TRANSFORMATIONAL LEADERSHIP



Developing servant leaders who
positively influence others

**“For even the Son of Man did not
come to be served, but to serve, and
to give his life as a ransom for many.”
— Mark 10:45 (NIV)**

OUR HISTORY

**A JOURNEY OF FAITH, HOPE, VISION...
AND A LITTLE CRAZY**



TOPICS

CURRICULUM

What we are using as a main resource for instruction

INSTRUCTION

Our teachers, strategies, and more.

ENROLLMENT

Tuition enrollment and fees

BUILDING

What our facility currently has and needs.

FUTURE

What is our plan for the next months years and beyond

PARTNERSHIP

How you can help the vision.

RENEWANATION



Successfully launched just under 100 private Christian schools all over the nation



Grounded in a thorough biblical worldview, emphasizing students role in every subject



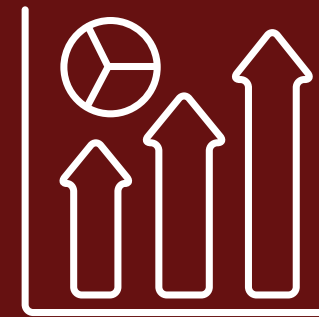
Not just ideas, but they equip leadership teams with tools to be a sustainable school

BJU PRESS

CURRICULUM OVERVIEW



Biblical Worldview : Each subject is taught from a biblical perspective, ensuring students understand the relevance of Scripture in all areas of learning. Programs like Pathways for Preschool and Footsteps for Fours develop foundational knowledge and skills in Bible



Academic Rigor : The curriculum is designed to challenge students and promote critical thinking, preparing them for higher education and life beyond school.



Comprehensive Scope: Offers a full range of subjects including Bible, Math, Science, Language Arts, and Social Studies, with detailed lesson plans and objectives. **Digital Resources:** Access to tools like Trove and AfterSchoolHelp provides additional support for both students and teachers.



CURRICULUM OVERVIEW

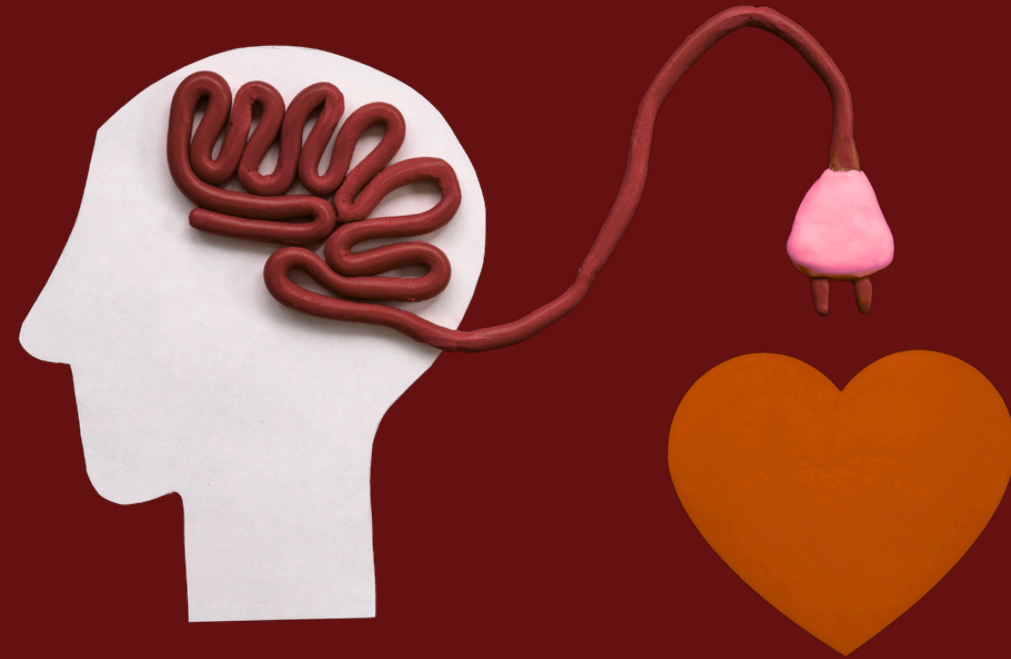
DUAL LANGUAGE



**PRE-K & K WILL INITIATE
OUR DUAL LANGUAGE
PROGRAM AND GRADES
THEREAFTER WILL DEVELOP
COMPLETE FLUENCY IN
SPANISH & ENGLISH
BY 5TH GRADE**

INSTRUCTION

**“IF YOU HAVE
A CHILD’S
HEART, YOU
HAVE A
CHILD’S MIND.”**



**ANXIETY AND FEAR
DIRECTLY EFFECT
LEARNING**

**SMALL CLASS SIZES = BIG IMPACT...
10-15 PER CLASSROOM**

**DISCIPLINE - RESTORATIVE, RECONCILIATION,
CHARACTER GROWTH, TRANSPARENCY FOR FAMILY**

Complete Information will be available in our Parent / Student Handbook

INSTRUCTION

Schedule

**SELF-CONTAINED
LUNCHES
SPECIALS
PE, ART, MUSIC,
CHAPEL**

Subjects

**ELAR
SLAR
MATH
SCIENCE
SOCIAL STUDIES
BIBLICAL STUDIES**

Complete Information will be available in our Parent / Student Handbook

Accreditation

Accreditation is ...

- An external review that verifies academic, safety, and spiritual standards
- A commitment to continuous improvement and accountability
- Recognition that transcripts and diplomas meet widely accepted standards
- A process that takes time and demonstrates intentional growth

Accreditation is NOT

- A guarantee of perfection or that problems never happen
- Just a rubber stamp for paying a fee
- The only measure of a school's quality
- Something instant or superficial
- Needed to provide quality instruction

Different Pursuits of Accreditation

- **ICAA (International Christian Accrediting Association)- 2 years**
- **ACTABS (Accreditation Commission of the Texas Association of Baptist Schools) - 2 years**
- **ACSI Association of Christian Schools International - 3.5 years**
- **TAAPS (Texas Alliance of Accredited Private Schools) - 2 years**

EXCEPTIONALITIES

504 SPECIAL ED DYSLEXIA

Our goal is to serve as many students as we can well, and we will be transparent about limitations.



Complete Information will be available in our Parent / Student Handbook

HEALTH & FOOD

- Immunization record are a part of the enrollment process.
- We do allow exemptions that must be documented.
- Student must be fever free under 100 degrees farenheit for 24 hours.
- If student becomes sick, parent must promptly take their student home.
- At this time, we will not provide hot food lunches until our kitchen can appropriately fulfill all state requirements.
- We do plan on having self-contained lunch options for a fee, these options will be available at a later time.

Complete Information will be available in our Parent / Student Handbook

TEACHERS

Join Our Team. We are looking for educators

- **Qualifications:**
 - A heart for Christ-centered education.
 - Bachelor's degree in a relevant subject area.
 - Teaching certification is preferred but not required.
- **Compensation & Benefits:**
 - Competitive salary with higher pay for certified teachers.
 - Stipends available for additional roles and responsibilities.
 - Healthcare options to come.
- **Professional Development:**
 - Ongoing training and support to foster growth and excellence in teaching.
 - Access to resources and tools to enhance instructional effectiveness.



Complete Information will be available in our Employee Handbook

OUR BUILDING

7+ CLASSROOMS

5 BATHROOM AREAS

FULL KITCHEN

LARGE SANCTUARY

OFFICES

CAFETERIA

FIRE/HEALTH CODE INSPECTIONS

PLAYGROUND

COUNSELING/MEETING SPACES

SECURITY & CAMERAS

SECURE DOORS

HIGH SPEED INTERNET

PICK-UP/ DROP-OFF LOCATIONS

BUS & VANS

TUITION & FEES

Tuition for the 2026–2027 school year is \$9,240 per student, if you pay in full by June 1st you receive a 5% discount. If you want to pay tuition in installments there will be a 5% install fee.

Application- \$50 (non-refundable)

Enrollment - \$250 (non-refundable)

Sibling Discounts

Legacy Christian Academy offers tuition discounts for families with multiple children enrolled, applied to the student(s) with the lowest tuition rate:

- Second child – 5% discount**
- Third child – 10% discount**
- Fourth child and beyond – 15% discount**

TUITION & FEES

Referral Incentive

If you refer a family and they successfully enroll, you receive \$350 off your of your annual tuition up to 10 times per student.

Tuition Assistance

Need-based tuition assistance is available. All assistance applications will be reviewed confidentially, and awards will be determined based on documented financial need.

Tuition assistance programs will be initiated in March with a 3rd party company. After thorough review, we will receive recommendations after the review process.

COVENANT FAMILY

Requirements for enrollment

1. **Commitment to Christ:** A personal relationship with Jesus Christ.
2. **Church Involvement:** Active participation in a local church.
3. **Partnership with LCA:** Agreement with school policies and mission.
4. **Support of School Policies:** Adherence to academic and behavioral expectations.
5. **Service & Community Engagement:** Active involvement in school events and activities.

ENROLLMENT PROCESS

- 1. Submit Interest Form: Available on our website.**
- 2. Schedule Campus Visit: Tour our facilities and meet our staff.**
- 3. Complete Application: \$50 non-refundable fee.**
- 4. Family Interview: Meet with administration to discuss the partnership.**
- 5. Submit Required Documents:**
 - Pastoral Recommendation**
 - Student Records**
 - Entrance Exam**
 - Financial Integrity Form**
 - Health Records / Immunizations**
 - Complete Enrollment Application: \$250 fee after you are accepted.**

Education Savings Account (ESA).

We expect the application period for private schools to open in fall 2025; the exact date has not been finalized. Private schools must be in Texas, accredited by an organization recognized by the Texas Private School Accreditation Commission or another accreditor recognized by the Texas Education Agency, and in continuous operation for at least two school years preceding the date of application. They also must annually administer a nationally recognized, norm-referenced assessment to participating students in grades 3-12. More information will be forthcoming soon.

STRATEGIC PRIORITIES

Every decision flows from our mission to develop biblically rooted, academically excellent, purpose-driven students. Our three strategic priorities guide how we invest, build programs, and grow—laying a foundation that will shape generations through Christ-centered education.

01

Kingdom-minded campus

To fulfill our mission of raising biblically rooted and academically prepared students, we must provide high-quality instruction and Christ-centered curriculum that challenges the mind and disciplines the heart. Students cannot transform culture unless they are both equipped with knowledge and grounded in truth.

02

Secure, Loving, & Accessible

Our physical environment should reflect the excellence and intentionality of our God-given mission. A secure, engaging, and functional campus communicates value, inspires learning, supports community, and reflects the kind of kingdom legacy we want students to embody.

03

Christ-centered Partnerships

We believe lasting transformation happens when the school, family, and community walk in unity to support the spiritual and academic growth of each student. Strategic Priority: We will intentionally cultivate Christ-centered partnerships with parents, churches, and local organizations to strengthen the discipleship of students and expand our Kingdom impact beyond the classroom.

STEP ONE (COMPLETE).

-  Facility Rental (\$70,000) - Completed

A building valued at over \$550,000, ready to become a thriving academic and spiritual center.

-  Learning Resources - (\$15,000) Completed

Over \$15,000 in didactic materials and educational tools to enhance student learning.

-  Security System - (\$10,000) Completed

Installed and operational—\$7,000 invested to ensure a safe learning environment.





-  Fenced Playground Area (\$10,000) - Completed

Outdoor recreational space that promotes physical health and community-building among students.

STEP TWO

- 🧑 Student Information System – FACTS \$4,000
- 📖 Sponsor a Classroom – \$3,000 per room (7 rooms)
- 🧒 Playground Expansion – \$10,500 (Shade structures, swings, turf, toddler-safe areas)
- 🚪 Campus Security Upgrades – \$20,000 (Additional cameras, entry systems, fencing, doors) New entry system is currently being installed!
- 💡 Technology Package – \$10,000 (Smartboards, student laptops, Wi-Fi upgrades)

STEP TWO CONTINUED..

-  Curriculum & Materials – \$3,000 per grade level (7 groups) (Textbooks, hands-on tools, Christian resources)
-  Marketing, Website & Signage – \$45,000
-  Teacher Development Fund – \$8,000 annually
(Conferences, certifications, retreats, continuing education)
-  Student Needs-Based Financial Assistance Fund – 1,000- \$2,500 per student in need (Support a child's Christian education)

Step 2 total \$150,000

DEVELOPMENT & FUTURE

- **Early Child learning, After-School programs. January 2026**
- **PreK–12th grade instruction rooted in academic rigor, Biblical truth, and whole-child development.**
- **A multipurpose center that serves as a chapel, cafeteria, sports, fine arts venue, and community hub.**

What is next... Sign our interest form...

- Become a partner through our website (or scan the QR code)
- Start the enrollment process for a potential student
- Explore employment opportunities — sign up for an interview
- Receive important updates as they arise
- Come to our next Open House and invite a friend in early November

THANK YOU

Give Link



Interest Form

